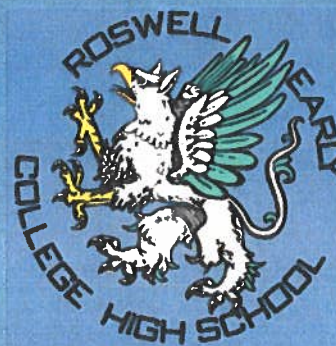




ROSWELL EARLY COLLEGE HIGH SCHOOL

**COURSE PATHWAYS AND
INFORMATION GUIDE**



CORE COURSES



9TH GRADE (1st Semester)

English	Math	Science	History	PE/Health	Electives
English 9	Algebra I	General Science	NM History	Health	ENMU-R Basic Computer Skills I CIT 101
	Geometry*				

9TH GRADE (2nd Semester)

English	Math	Science	History	PE/Health	Electives
English 10	Geometry	Biology	World History		ENMU-R Basic Computer Skills II CIT 151
	Algebra II*				

10TH GRADE (1st Semester)

English	Math	Science	History	PE/Health	Electives
English 11	Algebra II	Chemistry	US History		ENMU-R Interpersonal Communications COMM 101
	Probability/ Statistics*				
	Algebra II/ ENMU-R Math 107**				

10TH GRADE (2nd Semester)

English	Math	Science	History	PE/Health	Electives
English 12	Probability/Statistics		Government/ Economics	Physical Fitness	ENMU-R Principles of Student Success UNIV 101
ENMU-R English 102***	ENMU-R Intermediate Algebra Math 107**				
	ENMU-R College Algebra Math 119**				

*only if student took Algebra I in 8th grade

***Need a 3.0 GPA & ENMU-R AccuPlacer test placement in ENG 102 or Higher

**Need a 3.0 GPA & ENMU-R AccuPlacer test placement in MATH 107 or Higher



ECHS CREDITS EARNED

NAME: _____

ENROLLED: _____

CLASS	Passed ✓
ENGLISH (4 CREDITS)	
English 9	1.0
English 10	1.0
English 11	1.0
English 12	1.0
SOCIAL STUDIES (3.5 CREDITS)	
NM History	0.5
World History	1.0
US History	1.0
US Government	0.5
Economics	0.5
MATH (4 CREDITS)	
Algebra I	1.0
Geometry	1.0
Algebra II	1.0
	1.0
SCIENCE (3 CREDITS)	
General Sci	1.0
Biology	1.0
Chemistry	1.0
OTHER (2.5 CREDITS)	
Health	0.5
Physical Fitness	1.0
CCI/WkRd	1.0

CLASS	✓	CLASS	✓
ELECTIVES (11 CREDITS)			
0.5		12.0	
1.0		12.5	
1.5		13.0	
2.0		13.5	
2.5		14.0	
3.0		14.5	
3.5		15.0	
4.0		15.5	
4.5		16.0	
5.0		16.5	
5.5		17.0	
6.0		17.5	
6.5		18.0	
7.0		18.5	
7.5		19.0	
8.0		19.5	
8.5		20.0	
9.0		20.5	
9.5		21.0	
10.0		21.5	
10.5		22.0	
11.0		22.5	
11.5		23.0	

AVIATION PATHWAY

Program Overview

Aviation Maintenance Technology (AMT) is a challenging career field with excellent employment opportunities. The AMT program runs approximately 14.5 consecutive months, making this program one of the fastest and most competitive in terms of completion time available. We believe that by training students and preparing them for FAA licensure in the shortest time frame possible, we provide a gateway to careers much sooner and in a more cost effective manner than other AMT training programs. Because of this schedule, please consult AMT faculty, academic advisors, or the Career and Technical Education Division concerning semester start dates. Completing courses in the sequence and schedule offered is critical to successful completion of the program.

Upon successful completion of the FAA FAR Part 147 program, students will be issued a certificate acknowledging the student's eligibility for FAA testing. Students seeking an Associate of Applied Science degree must also successfully complete additional general education classes. Applicants for the A.A.S. degree who are currently FAA Airframe & Powerplant certificate holders may apply their A&P certificate towards the AMT portion of the A.A.S. degree.

Total Hours Required for Certificate: 52

GAMT	101	Aviation Science	2
GAMT	102	Shop Practices	2
GAMT	103	Ground Operations	2
GAMT	104	Federal Regulations	1
GAMT	105	Weight and Balance	1
GAMT	106	Basic Electricity	2
AFRM	101	Aircraft Electrical Systems	2
AFRM	102	Assembly and Rigging	1
AFRM	103	Sheet Metal	4
AFRM	104	Welding	1
AFRM	105	Wood, Fabric and Finishes	1
AFRM	106	Composite Structures	2
AFRM	107	Instruments and Navigation/Communication	1
AFRM	108	Hydraulic, Pneumatic, and Fuel Systems	3
AFRM	109	Landing Gear Systems	2
AFRM	110	Aircraft Auxiliary Systems	2
AFRM	111	Aircraft Inspection	1
PWPL	101	Fuel Metering and Induction systems	3
PWPL	102	Aircraft Propellers	2
PWPL	103	Aircraft Powerplant Electrical Systems	3
PWPL	104	Aircraft Reciprocating Engines	2
PWPL	105	Aircraft Reciprocating Engine Overhaul	5
PWPL	106	Aircraft Turbine Engine Theory	2
PWPL	107	Turbine Engine Overhaul	3
PWPL	108	Aircraft Powerplant Inspection	2

Sidebar: The average entry level salary range in New Mexico for a professional with an Associate of Applied Science degree in Aviation Maintenance Technology is \$35,015-\$59,990 a year.

Top related in demand occupations: avionics technician, aircraft mechanic, engine assembler, service technician

See also related fields: Air Traffic Control, Professional Pilot Training



AVIATION PATHWAY

11TH GRADE

English	Math	Communications	Aviation Maintenance
ENMU-R English 102**	ENMU-R Intermediate Algebra Math 107***	ENMU-R Success Skills for College and Life UNIV 101*	ENMU-R GAMT101 Aviation Science GAMT 102 Shop Practices GAMT 103 Ground Operations GAMT 104 Federal Regulations
		ENMU-R Interpersonal Communications COMM 101*	ENMU-R GAMT 105 Weight and Balance GAMT 106 Basic Electricity AFRM 101 Aircraft Electrical Systems AFRM 102 Assembly and Rigging AFRM 103 Sheet Metal AFRM 104 Welding

12TH GRADE

English	Math	Communications	Aviation Maintenance
			ENMU-R
			AFRM 105 Wood, Fabric and Finishes
			AFRM 106 Composite Structures
			AFRM 107 Instruments and Navigation/Comm.
			AFRM 108 Hydraulic, Pneumatic, and Fuel System
			AFRM 109 Landing Gear Systems
			AFRM 110 Aircraft Auxiliary Systems
			AFRM 111 Aircraft Inspection
			PWPL 101 Fuel Metering and Induction systems
			PWPL 102 Aircraft Propellers
			PWPL 103 Aircraft Powerplant Electrical Systems PWPL 104 Aircraft Reciprocating Engines PWPL 105 Aircraft Reciprocating Engine Overhaul PWPL 106 Aircraft Turbine Engine Theory PWPL 107 Turbine Engine Overhaul PWPL 108 Aircraft Powerplant Inspection Total Hours Required for Certificate : 52

* Should have been completed in 9th and 10th grade year.

**Need a 3.0 GPA & ENMU-R AccuPlacer test placement in MATH 107 or Higher
Prerequisite: Satisfactory ACT scores or Math 097/098

***Need a 3.0 GPA & ENMU-R AccuPlacer test placement in ENG 102 or Higher
Prerequisite: Satisfactory ACT scores or Placement Exam scores or ENG 096

AUTOMOTIVE TECHNOLOGY PATHWAY

Program Overview

The Automotive Technology Program is designed for students who want to pursue a high-tech career. This program is nationally certified by ASE/NATEF and covers all eight areas of study which are highly regarded and recognizable in the automotive industry. This prepares students to become certified as Master Technicians by the National Institute for Automotive Service Excellence. Employers nationwide respect these certificates. The program is also Snap-On certified and students will receive certificates from Snap-On.

Why Automotive Technology?

Students successfully completing the program will be skilled in the latest advances in automotive technology.

Graduates will receive assistance in locating appropriate employment. Current graduates are gainfully employed in a wide variety of automotive dealerships and independent shops.

Note: This program requires students to purchase their own tools and uniform shirts. To obtain a list of required tools and where to purchase uniform shirts, contact a program instructor.



Completion Options

The A.A.S. Degree in Automotive Technology transfers into a Bachelor of Applied Arts and Sciences (BAAS) Degree program at ENMU. A Certificate of Employability (40 credit hours) and a Certificate of Occupational Training (52 credit hours) is also available in Automotive Technology. Students can also earn a Certificate in Automotive Brakes for 6 credit hours and a Level I Certificate for 14 credit hours.

See the current catalog for the complete degree program. Course availability varies each semester.

Associate of Applied Science -67 credit hours

AT 112 Automotive Brakes.....	6
AT 114 Electrical Systems I.....	3
AT 115 Electrical Systems II.....	5
AT 116 Heating & Air Conditioning.....	4
AT 118 Wheel Alignment and Suspension.....	4
AT 122 Automatic Transmissions/Transaxles.....	4
AT 124 Manual Transmissions & Axles.....	5
AT 130 Engine Repair.....	5
AT 132 Engine Performance I.....	5
AT 134 Engine Performance II.....	5
AT 294 Co-op/Internship Training.....	3

Career Outlook

The entry level salary range for a professional in New Mexico with an Associate of Applied Science degree in Automotive Technology is \$22,670 to \$38,480 a year. Top related in demand occupations: auto body/related repair, diesel service technicians, mechanical/small engine mechanics, recreational vehicle service technician, engine assembler

See also ENMU-R related programs: Aviation Maintenance Technology, Heating, Ventilation, Air Conditioning-Refrigeration Technology (HVAC), and Welding.

AUTOMOTIVE TECHNOLOGY PATHWAY

11TH GRADE

English	Math	Communications	Automotive Technology
ENMU-R English 102**	ENMU-R Intermediate Algebra Math 107***	ENMU-R Success Skills for College and Life UNIV 101*	ENMU-R Semester 1 AT 112 Automotive Brakes AT 114 Electrical Systems I
		ENMU-R Interpersonal Communications COMM 101*	ENMU-R Semester 2 AT 115 Electrical Systems II AT 116 Heating & Air Conditioning

12TH GRADE

English	Math	Communications	Automotive Technology
			ENMU-R Semester 1
			AT 118 Wheel Alignment and Suspension
			AT 122 Automatic Transmissions/Transaxles
			AT 124 Manual Transmissions & Axles
			ENMU-R Semester 2
			AT 130 Engine Repair
			AT 132 Engine Performance I
			AT 134 Engine Performance II
			AT 294 Co-op/Internship Training

- Should have been completed in 9th and 10th grade year.
- **Need a 3.0 GPA & ENMU-R AccuPlacer test placement in MATH 107 or Higher
- *Prerequisite: Satisfactory ACT scores or Math 097/098*
- ***Need a 3.0 GPA & ENMU-R AccuPlacer test placement in ENG 102 or Higher
- *Prerequisite: Satisfactory ACT scores or Placement Exam scores or ENG 096*

WELDING TECHNOLOGY PATHWAY

Program Overview

The Welding Technology Program teaches the necessary skills required to become an entry level I welder. Welding processes and related knowledge include:

Certificate of Employability - Basic

CTE 210 Employability Skills.....	3
WELD 110 Introduction to Welding.....	4
WELD 115 Print Reading.....	3
WELD 125 Gas Metal Arc/Flux Core	6
WELD 131 Beginning Arc I.....	4
WELD 132 Beginning Arc II.....	4
WELD 135 Gas Tungsten Arc.....	6

Certificate of Employability - Advanced

MATH 105 Technical Math.....	3
WELD 118 Basic Metallurgy & Weld Testing App.....	3
WELD 210 Intermediate Arc/Cutting.....	6
WELD 221 Advanced Arc/Pipe I.....	4
WELD 222 Advanced Arc/Pipe II.....	4
WELD 232 Pipefitting for Welders	4
IET 220 Machine Tools Technology with lab.....	4



Using a variety of the “hands-on” equipment and the latest in technology training, students will become qualified in various welding procedures offered within the course structures. This will give a student the ability to produce sound weld tests required by most companies.

Career Outlook

Careers in welding are in high demand in a variety of industries. Job titles include: Welding Fabricator, Pipe Welder, Structural Welder, Sanitary Stainless Steel Tubing Welder, Fitter, Business Owner, Shop Forman, Educator, and Welding Inspector, just to name a few.

The median annual Welder I salary is approximately **\$37,245**. The salary range is generally between \$32,409 - \$42,798, however this can vary widely depending on a variety of factors.

Why Welding Technology?

A vast knowledge of welding can lead you to many different careers in places all around the globe. Welding is a trade that will never become lost in the ever-changing world of technology. There will always be a need for highly-skilled and knowledgeable welders.

ENMU-Roswell classes are taught by American Welding Society (AWS) Certified Welding Inspectors/Certified Welding Educators with years of knowledge and experience to deliver the tools needed in the welding industry.

By the year 2020, there will be an estimated 400,000 welding jobs available in the U.S. alone. This is due to the increasing number of welders at retiring age.

WELDING TECHNOLOGY PATHWAY

11TH

English	Math	Communications	Welding Technology
ENMU-R English 102**	ENMU-R Intermediate Algebra Math 107***	ENMU-R Success Skills for College and Life UNIV 101*	ENMU-R Semester 1 CTE 210 Employability Skills WELD 110 Introduction to Welding WELD 115 Print Reading
		ENMU-R Interpersonal Communications COMM 101*	ENMU-R Semester 2 WELD 125 Gas Metal Arc/Flux Core WELD 131 Beginning Arc WELD 132 Beginning Arc I
			WELD 135 Gas Tungsten Arc

12TH GRADE

English	Math	Communications	Welding Technology
ENG 133 Writing for Tech- nical Professionals	MATH 105 Technical Math		ENMU-R Semester 1
			WELD 118 Basic Metallurgy & Weld Testing App
			WELD 210 Intermediate Arc/Cutting
			WELD 221 Advanced Arc/Pipe I
		CIT 135 Computer Applications for Technical Education	ENMU-R Semester 2
			WELD 222 Advanced Arc/Pipe II
			WELD 232 Pipefitting for Welders
			IET 220 Machine Tools Technology with lab

Should have been completed in 9th and 10th grade year.

**Need a 3.0 GPA & ENMU-R AccuPlacer test placement in MATH 107 or Higher

Prerequisite: Satisfactory ACT scores or Math 097/098

***Need a 3.0 GPA & ENMU-R AccuPlacer test placement in ENG 102 or Higher

Prerequisite: Satisfactory ACT scores or Placement Exam scores or ENG 096

CONSTRUCTION TECHNOLOGY

Program Overview

The Certificate of Employability in Construction Trades prepares students for careers in the construction industry. Students learn basic skills in the key residential construction areas: technical drawing, electricity, plumbing, HVAC, and woodworking.

Program Courses

The Certificate of Employability is the first level towards an Associate of Applied Science degree in Industrial Engineering Technology. See the current catalog for the complete degree plan. Course availability varies each semester.



Certificate of Employability – 30 credit hours

IET 106 Residential Construction I.....	4
IET 107 Basic Plumbing.....	4
ELEC 101 Introduction to Electricity.....	4
ENGR 111 Technical Drawing.....	4
CTE 210 Employability Skills.....	3
HVAC 101 Intro to Air Conditioning and Refrigeration.....	4
IET 105 Basic Woodworking.....	3
IET 108 Residential Construction II.....	4

Sidebar:

The average entry level salary range in New Mexico for a professional with a Certificate of Employability in Construction Trades could range up to \$14.30/hour. Top related in demand occupations: Construction manager, stonemasons, carpenters, and metal fabricators.

See also related fields: Industrial Engineering Technology, Engineering and Design Technology, Heating, Ventilation, Air Conditioning-Refrigeration Technology (HVAC).



CONSTRUCTION TECHNOLOGY

11TH GRADE

English	Math	Communications	Construction Technology
ENMU-R English 102**	ENMU-R Intermediate Algebra Math 107***	ENMU-R Success Skills for College and Life UNIV 101*	ENMU-R Semester 1 CTE 210 Employability Skills ELEC 101 Introduction to Electricity ELEC 202 Advanced Electricity
		ENMU-R Interpersonal Communications COMM 101*	ENMU-R Semester 2 ET 110 Survey of Electronics HVAC 101 Introduction to Air Conditioning & Refrigeration
			IET 102 Introduction to Industrial Maintenance

12TH GRADE

English	Math	Communications	Construction Technology
ENG 133 Writing for Technical Professionals	MATH 105 Technical Math		ENMU-R Semester 1 IET 120 Print Reading IET 180 Programmable Logic Controllers I
			IET 185 Programmable Logic Controllers II
			IET 212 Mechanisms
			WELD 218 Industrial Welding
		CIT 135 Computer Applications for Technical Education	ENMU-R Semester 2
			IET 214 Hydraulics & Pneumatics
			IET 220 Machine Tool Technology with Lab
			IET 216 Mechanical Power Transmission
			IET 294 IET Co-op / Internship

Should have been completed in 9th and 10th grade year. ENTR 101 The Entrepreneurial Mindset

**Need a 3.0 GPA & ENMU-R AccuPlacer test placement in MATH 107 or Higher

Prerequisite: Satisfactory ACT scores or Math 097/098

***Need a 3.0 GPA & ENMU-R AccuPlacer test placement in ENG 102 or Higher

Prerequisite: Satisfactory ACT scores or Placement Exam scores or ENG 096

HVAC TECHNOLOGY



Program Overview

The HVAC/R program at ENMU-Roswell is a Nationally Accredited program and the only one in Southeastern New Mexico. Heating, ventilation, air conditioning-refrigeration (HVAC/R) systems control temperature, humidity, and the total air quality in residential, commercial, and industrial structures worldwide. Additionally, the food service and medical industries rely very heavily upon the reliability of heating and cooling systems. HVAC/R technicians install, repair, and maintain these systems using strong mathematical skills, computer literacy, and communication skills, in addition to hands-on skills related to the latest technology specific to HVAC/R equipment, tools, and systems.



See the current catalog for the complete degree plan. Course availability varies each semester.

ELEC 101 Introduction to Electricity.....	4
HVAC 101 Intro to Air Conditioning & Refrigeration.....	4
HVAC 201 Refrigeration Cycle and Diagrams.....	4
HVAC 212 Heat Pumps.....	4
HVAC 235 Air Flow Principles/Duct Design.....	4
ELEC 201 - HVAC/R Advanced electricity.....	4
ELEC 202 Advanced Electricity.....	4
ELEC 203 HVAC/R Control Systems.....	4
REFR 202 Ice Makers.....	4
HVAC 203 HVAC Heating Systems.....	4
REFR 210 Multiplexed Evaporator Systems.....	4
HVAC 218 HVAC/R Service & Problem Analysis.....	4
HVAC 294 Co-op/Internship Training.....	3

Career Outlook

According to the Air Conditioning and Refrigeration Institute, an additional 20,000 HVAC/R technicians are needed each year. New Mexico Department of Labor statistics also report an expected 33% growth in the HVAC/R industry over the next several years.

The average entry level salary range in New Mexico for a professional with an Associate of Applied Science degree in Heating, Ventilation, Air Conditioning-Refrigeration Technology is \$29,000-\$39,000 a year.

Top related in demand occupations: HVAC mechanic, refrigeration mechanics/installers, home appliance and vending machine repairs, line installers

See also related fields: Industrial Engineering, Engineering and Design Technology

HVAC TECHNOLOGY

11TH GRADE

English	Math	Communications	Construction Technology
ENMU-R English 102**	ENMU-R Intermediate Algebra Math 107***	ENMU-R Success Skills for College and Life UNIV 101*	ENMU-R Semester 1 CTE 210 Employability Skills ELEC 101 Introduction to Electricity HVAC 101 Introduction to Air Conditioning & Refrigeration
		ENMU-R Interpersonal Communications COMM 101*	ENMU-R Semester 2 HVAC 212 Heat Pumps HVAC 235 Air Flow Principles/Duct Design
			ELEC 201 HVAC/R Advanced Electricity

12TH GRADE

English	Math	Communications	Construction Technology
ENG 133 Writing for Technical Professionals	MATH 105 Technical Math		ENMU-R Semester 1 ELEC 202 Advanced Electricity
			ELEC 203 HVAC/R Control Systems
			REFR 202 Ice Makers
			HVAC 203 HVAC Heating Systems
		CIT 135 Computer Applications for Technical Education	ENMU-R Semester 2
			REFR 210 Multiplexed Evaporator Systems
			*HVAC 218 HVAC/R Service & Problem Analysis
			IET 294 IET Co-op / Internship

Should have been completed in 9th and 10th grade year. ENTR 101 The Entrepreneurial Mindset

**Need a 3.0 GPA & ENMU-R AccuPlacer test placement in MATH 107 or Higher

Prerequisite: Satisfactory ACT scores or Math 097/098

***Need a 3.0 GPA & ENMU-R AccuPlacer test placement in ENG 102 or Higher

Prerequisite: Satisfactory ACT scores or Placement Exam scores or ENG 096

CRIMINAL JUSTICE

Program Overview

The Criminal Justice Associate of Arts degree program prepares graduates to begin careers in law enforcement, corrections, probation, and/or juvenile corrections. This curriculum can serve as a terminal occupational degree program for students seeking immediate employment in the private sector or in government agencies at the local, state, or national level. The balanced, liberal arts degree includes the study of law, criminal justice, social sciences, humanities, behavioral sciences, natural sciences, and general education courses. The degree can apply toward a bachelor's degree in Criminal Justice or other majors at several of New Mexico's four-year state universities. Students who plan to transfer to an upper-level institution should consult catalogs and advisors at those institutions to determine transferability of all courses taken at ENMU-Roswell.



Why Criminal Justice?

Police officers protect lives and property and remain a valued and much needed occupation. Continued interest for public safety will lead to new openings for officers; however, jobs may be competitive, depending on location.

Completion Options

Students who have successfully completed: 1) a New Mexico Department of Public Safety basic or NMDPS-approved satellite police certification training academy or 2) the United States Border Patrol Basic Training Program (USBP), the Federal Air Marshal Basic Training Program (FAMTP), or the Land Management Basic Police Training Program (LMPT) will receive credit for CJ 102, CJ 202, CJ 215, CJ 289, and HPE 141 upon provision of an official transcript. Students who have successfully completed the New Mexico Department of Corrections correctional officer basic training academy will receive credit for CJ 102 and CJ 203 upon provision of an official transcript.

The Associate of Arts (AA) degree in Criminal Justice transfers to a Bachelor of Arts or Bachelor of Sciences (BA or BS) degree program at ENMU.

See the current catalog for the complete degree plan. Course availability varies each semester.

Associate of Arts -65 credit hours

CJ 102 Introduction to Criminal Justice.....	3
CJ 203 Introduction to Corrections.....	3
CJ 205 Criminal Procedures.....	3
CJ 215 Introduction to Policing in America.....	3
CJ 220 Ethics and Liability in Criminal Justice.....	3
CJ 233 Juvenile Justice.....	3
CJ 284 American Judicial System.....	3
CJ 289 Criminal Law.....	3
CJ 294 Practicum (required)	3

Career Outlook

The average entry level salary range in New Mexico for a professional with an Associate of Arts degree in Criminal Justice in New Mexico is \$39,500 to \$44,990 a year.

Top related in-demand occupations: bailiff, security guard, investigator, detective, police officer, correctional officer, probation and parole officer

CRIMINAL JUSTICE

11TH GRADE

English	Math	Communications	Criminal Justice
ENMU-R English 102**	ENMU-R Intermediate Algebra Math 107***	ENMU-R Success Skills for College and Life UNIV 101*	ENMU-R Semester 1 CTE 210 Employability Skills CJ 102 Intro to Criminal Justice
		ENMU-R Interpersonal Communications COMM 101*	ENMU-R Semester 2 CJ 203 Intro to Corrections CJ 205 Criminal Procedures
			CJ 215 Intro to Policing in America

12TH GRADE

English	Math	Communications	Criminal Justice
ENG 104 English Composition and Research	STAT 213 Statistical Methods	PSCI 102 American National Government	ENMU-R Semester 1 ELEC 202 Advanced Electricity
			CJ 220 Ethics/Liability in Criminal Justice
			CJ 233 Juvenile Justice
			CJ 284 Amer. Judicial System
		CIT 135 Computer Applications for Technical Education	ENMU-R Semester 2
			CJ 289 Criminal Law
			CJ 294 Practicum (required)
			SOC 212 Contemporary Social Issues

Should have been completed in 9th and 10th grade year. ENTR 101 The Entrepreneurial Mindset

**Need a 3.0 GPA & ENMU-R AccuPlacer test placement in MATH 107 or Higher

Prerequisite: Satisfactory ACT scores or Math 097/098

***Need a 3.0 GPA & ENMU-R AccuPlacer test placement in ENG 102 or Higher

Prerequisite: Satisfactory ACT scores or Placement Exam scores or ENG 096

MEDIA ARTS PATHWAY

Program Courses

The Graphic Design track prepares students for the competitive digital production marketplace by developing artistic mastery in various areas of Media Arts. See the current catalog for the complete degree plan. 20 credit hours at 200 level courses are required. Course availability varies each semester.

Graphic Design

Certificate of Employability—27 credit hours

Associate of Applied Science—62 credit hours

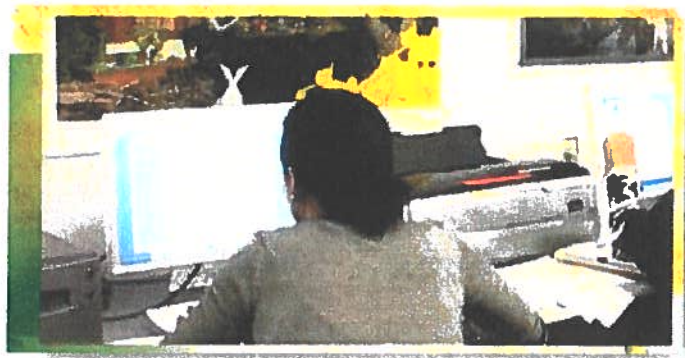
Associate of Applied Science -62 credit hours

MA 103 Introduction to MAC Office Suites.....	3
MA 110 Graphic Design: Basics.....	4
MA 112 Graphic Design: Photoshop.....	4
MA 114 Graphic Design: Computer Illustration.....	4
MA 116 Graphic Design: Page Layout.....	4
MA 118 Graphic Design: Digital Video Editing I.....	4
MA 222 Graphic Design: Concept Development.....	4
MA 212 Graphic Design: Web Publishing.....	4
MA 214 Graphic Design: Publication.....	4
MA 294 Practicum in Media Arts.....	3

Sidebar:

The average entry level salary range in New Mexico for a professional with an Associate of Applied Science degree in Graphic Design is \$26,700-\$66,530 a year. Top related in demand occupations: commercial/ industrial design, fashion/floral design, computer software engineers, desktop publishers

See also related fields: University Studies and Computer Applications and Support



MEDIA ARTS PATHWAY

11TH GRADE

English	Math	Communications	Media Arts
ENMU-R English 102**	ENMU-R Intermediate Algebra Math 107***	ENMU-R Success Skills for Col- lege and Life UNIV 101*	ENMU-R Semester 1 CTE 210 Employability Skills MA 103 Introduction to MAC Office Suites
		ENMU-R Interpersonal Communications COMM 101*	ENMU-R Semester 2 MA 110 Graphic Design: Basics MA 114 Graphic Design: Illustration
			MA 112 Graphic Design: Photoshop

12TH GRADE

English	Math	Communications	Media Arts
ENG 104 English Composi- tion and Research	STAT 213 Statistical Methods	PSCI 102 American National Gov- ernment	ENMU-R Semester 1 MA 116 Graphic Design: Page Layout
			MA 118 Graphic Design: Digital Video Editing I
			MA 222 Graphic Design: Concept Development
			MA 212 Graphic Design: Web Publishing
		CIT 135 Computer Applications for Technical Education	ENMU-R Semester 2
			MA 214 Graphic Design: Publication
			MA 294 Practicum in Media Arts
			MA 215 Graphic Design: Digital Editing

Should have been completed in 9th and 10th grade year. ENTR 101 The Entrepreneurial Mindset

**Need a 3.0 GPA & ENMU-R AccuPlacer test placement in MATH 107 or Higher

Prerequisite: Satisfactory ACT scores or Math 097/098

***Need a 3.0 GPA & ENMU-R AccuPlacer test placement in ENG 102 or Higher

Prerequisite: Satisfactory ACT scores or Placement Exam scores or ENG 096

COMPUTER APPLICATIONS PATHWAY

Computer Applications and Support

Program Overview

This two-year course of study provides students the opportunity to learn computer applications, desktop troubleshooting, security issues, and project management skills. Skills Assessment Management software also prepares students for the MOS (Microsoft Office Specialist) exams. During their last semester of study, students have an opportunity to apply their acquired skills and knowledge of the workplace through a supervised internship.



Why Computer Applications and Support?

The need for effective computer skills is essential for workers in all fields.

Students are trained to use technology and software applications to successfully perform and coordinate the administrative activities of an office.

Mastery of computer applications, communication skills, and office management skills helps students be successful in many careers, as well as in further education.

Completion Options

The Associate of Applied Science Degree (A.A.S.) in Computer Applications and Support transfers into a Bachelor of Applied Arts and Sciences (BAAS) Degree at ENMU. A Certificate of Employability (16 credit hours) and a Certificate of Occupational Training (30 credit hours) are also offered in Computer Applications and Support. See the current catalog for the complete degree plan. Course availability varies each semester.

Associate of Applied Science-64 credit hours

CIT 101 Basic Computer Skills I	3	
CIT 210 Employability Skills & Customer Service	3	
CIT 185 Introduction to Computer Information Systems	3	
CIT 151 Basic Computer Skills II	3	
CIT 241 Business Math & Calculating Machines	3	
CIT 182 Ethics in Information Technology	1	
CIT 263 Microsoft Word	3	
CIT 263L Microsoft Word Lab	1	
CIT 274 Microsoft Excel	3	
CIT 274L Microsoft Excel Lab	1	
CIT 264 Desktop Publishing	3	
CIT 201 Business Communication	4	
CIT 221 Internet Technologies	3	
CIT 294 CIT Internship	3	
CIT 284 Microsoft Access	3	
CIT 284L Microsoft Access Lab	1	
CIT 285 Microsoft PowerPoint	3	
CIT 285L Microsoft PowerPoint Lab	1	
CIT 189 Helpdesk Technologies	3	

Career Outlook

The average entry level salary range in New Mexico for a professional with an Associate of Applied Science degree in Computer Applications and Support is \$24,360 to \$38,790 a year.

Top related in demand job settings/occupations: computer operator, information and database support, desktop publishing, customer support, banks, government, insurance, education agencies

See also ENMU-R related programs: Computer and Network Cyber Security, and Business Administration



COMPUTER APPLICATIONS PATHWAY

11TH GRADE

English	Math	Communications	Computer Applications
ENMU-R English 102**	ENMU-R Intermediate Algebra Math 107***	ENMU-R Success Skills for College and Life UNIV 101*	ENMU-R Semester 1 CTE 210 Employability Skills CIT 185 Introduction to Computer Information Systems
		ENMU-R Interpersonal Communications COMM 101*	ENMU-R Semester 2 CIT 151 Basic Computer Skills II CIT 241 Business Math & Calculating Machines
			CIT 182 Ethics in Information Technology

12TH GRADE

English	Math	Communications	Computer Applications
ENG 104 English Composition and Research			ENMU-R Semester 1 ACCT 201 Principles of Accounting I
			CIT 263 Microsoft Word
			CIT 263L Microsoft Word Lab
			CIT 274 Microsoft Excel CIT 274L Microsoft Excel Lab
		CIT 135 Computer Applications for Technical Education	ENMU-R Semester 2
			CIT 264 Desktop Publishing
			CIT 201 Business Communication
			CIT 221 Internet Technologies

Should have been completed in 9th and 10th grade year : ENTR 101 The Entrepreneurial Mindset , CIT 151 Basic Computer Skills II

**Need a 3.0 GPA & ENMU-R AccuPlacer test placement in MATH 107 or Higher

Prerequisite: Satisfactory ACT scores or Math 097/098

***Need a 3.0 GPA & ENMU-R AccuPlacer test placement in ENG 102 or Higher

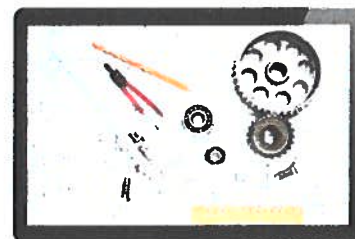
Prerequisite: Satisfactory ACT scores or Placement Exam scores or ENG 096

ENGINEERING AND DESIGN TECHNOLOGY PATHWAY

Engineering and Design Technology

Program Overview

Drafting is the graphic language used by industry to communicate ideas and plans, and take them from the creative design stage through production. Students enrolled in this program receive training in the fundamental principles of technical drawing, design production, building structures, working-drawings, construction drawings, floor plans, and elevations. Students will progress from board drafting and freehand sketching into 2-D design, 3-D wire frame, and solid modeling. Students gain knowledge of Computer Aided Drafting (CAD) to enhance precision and performance. The program prepares students for entry level employment as designers and draftspersons within architectural firms, engineering firms, mapping of utilities, construction contractors, and government agencies.



Program Courses

Available classes through ENMU-Roswell also prepare students planning to transfer to a four-year university to pursue a bachelor's degree in engineering and architecture. The A.A.S. Degree in Engineering and Design Technology transfers into a Bachelor of Applied Arts and Sciences (BAAS) Degree program at ENMU.

Also available are a Certificate of Occupational Training (36 credit hours); a Certificate of Employability with Emphasis in Architecture (18 credit hours); and a Certificate of Employability with Emphasis in Surveying (18 credit hours). See the current catalog for the complete degree plan. Course availability varies each semester.

Associate of Applied Science-65 credit hours

ENGR 101 Introduction to Engineering.....	1
ENGR 111 Technical Drawing.....	4
ENGR 211 Introduction to CAD-Mechanical.....	4
ENGR 212 Residential Architectural CAD.....	4
ENGR 213 Civil/Survey CAD.....	4
ENGR 120 Architectural Modeling.....	1
ENGR 205 Principles of Engineering.....	3
ENGR 222 Plane Surveying.....	3
ENGR 240 Commercial Architectural CAD.....	4
ENGR 245 Structural CAD.....	3
ENGR 125 Fabrication and Design.....	1
ENGR 220 Building Structures.....	3
ENGR 230 3-D Parametric CAD.....	4
ENGR 294 Engineering and Design Internship.....	3

Sidebar:

The average entry level salary range in New Mexico for a professional with an Associate of Applied Science degree in Engineering and Design Technology is \$25,000-\$35,000 a year.

Top related in demand occupations: architect, engineering managers, geoscientists, computer programmers, drafters
See also related fields: Fire Protection, Industrial Engineering, Renewable Energy Technology, Safety Engineering

ENGINEERING AND DESIGN TECHNOLOGY PATHWAY

11TH GRADE

English	Math	Communications	Engineering and Design
ENMU-R English 102**	ENMU-R Intermediate Algebra Math 107***	ENMU-R Success Skills for Col- lege and Life UNIV 101*	ENMU-R Semester 1 CTE 210 Employability Skills ENGR 101 Introduction to Engineering
		ENMU-R Interpersonal Communications COMM 101*	ENMU-R Semester 2 ENGR 111 Technical Drawing ENGR 135 Introduction to GIS
			ENGR 211 Introduction to CAD-Mechanical

12TH GRADE

English	Math	Communications	Engineering and Design
ENG 104 English Composi- tion and Research	MATH 105 Technical Math		ENMU-R Semester 1 ENGR 205 Principles of Engineering
			ENGR 212 Residential Architectural CAD
			ENGR 213 Civil/Survey CAD
			ENGR 120 Architectural Modeling
		CIT 135 Computer Applications for Technical Education	ENMU-R Semester 2
			ENGR 222 Plane Surveying
			ENGR 240 Commercial Architectural CAD
			ENGR 245 Structural CAD

Should have been completed in 9th and 10th grade year. ENTR 101 The Entrepreneurial Mindset , CIT 151 Basic Computer Skills II

**Need a 3.0 GPA & ENMU-R AccuPlacer test placement in MATH 107 or Higher

Prerequisite: Satisfactory ACT scores or Math 097/098

***Need a 3.0 GPA & ENMU-R AccuPlacer test placement in ENG 102 or Higher

Prerequisite: Satisfactory ACT scores or Placement Exam scores or ENG 096

EMERGENCY MEDICAL SERVICES

Program Overview

The ENMU-Roswell's Emergency Medical Services (EMS) Program is an EMS Bureau Training Program designed for students interested in a career in pre-hospital emergency medicine. The Paramedic Program is also accredited by the Committee on Accreditation of Allied Health Educational Programs for the Emergency Medical Service Professions. The program provides the student with the theoretical and practical preparation to qualify the successful graduate at four levels of service: 1) Emergency Medical Responder, 2) Emergency Medical Technician, 3) Advanced Emergency Medical Technician, or 4) Paramedic. These levels of instruction meet or exceed the New Mexico EMS Minimal Curriculum Standards. The Emergency Medical Responder, EMT, Advanced EMT, and Paramedic also meet or exceed the National EMS Educational Standards for these levels. Upon successful completion of a level, the graduate is eligible to take the New Mexico State Licensure and/or National Registry of EMT's examination. ENMU-Roswell offers refresher courses for all levels of service and continuing education courses that are of interest to the Medical and Emergency Medical Services community.



ENMU-Roswell's EMS Program is accredited by the Commission on Accreditation of Allied Health Education Programs (www.caahep.org) upon the recommendation of the Committee on Accreditation of Educational Programs for the Emergency Medical Services Professions (CoAEMSP). ENMU-Roswell's EMS Education Program is a New Mexico Approved EMS Training Program.

Program Courses

Mandatory drug screening and criminal background checks are required for all EMS students prior to entering the clinical areas. Students pursuing an Associate of Science degree in EMS must complete the Paramedic Certificate Program and additional General Education requirements. The A.S. in Emergency Medical Services transfers into a Bachelor of Applied Arts and Sciences (BAAS) Degree program at ENMU.

See the current catalog for all of the complete degree plans and entrance requirements. Course availability varies each semester. Core courses include:

Emergency Medical Technician, Certificate of Employability -16 credit hours
Advanced Emergency Medical Technician, Certificate of Employability-16.5 credit hours
Emergency Medical Technician, Paramedic, Associate of Applied Science- 67 credit hours
Emergency Medical Services, Associate of Science- 75 credit hours

EMS 121 Introduction to EMS.....3
EMS 101 BLS for the Healthcare Provider.....0.5
EMS 111 EMT..... 7
EMS 111L EMT Practicum.....2
EMS 113 EMT Capstone.....0.5
EMS 203 Pathophysiology.....3
EMS 208 Pharmacology.....3
EMS 209L Paramedic Lab I1
EMS 204 Pre-hospital Airway Management.....1
EMS 206 Paramedic Trauma Life Support.....3
EMS 214 Pre-hospital Medical Life Support I...5
EMS 210 EMS Colloquium I.....1

EMS 211L Clinical Practicum I.....3
EMS 219L Paramedic Laboratory II.....3
EMS 224 Pre-hospital Medical Life Support II...5
EMS 232 Special Consideration in EMS.....3
EMS 229L Paramedic Lab III.....2
EMS 240 EMS Colloquium II.....1
EMS 241L Clinical Practicum II.....2
EMS 231L EMS Vehicular Internship.....3

EMERGENCY MEDICAL SERVICES

11TH GRADE

English	Math	Communications	Emergency Medical Services
ENMU-R English 102**	ENMU-R Intermediate Algebra Math 107***	ENMU-R Success Skills for College and Life UNIV 101*	ENMU-R Semester 1 CTE 210 Employability Skills EMS 202 Introduction to Paramedic
		ENMU-R Interpersonal Communications COMM 101*	ENMU-R Semester 2 EMS 203 Pathophysiology EMS 204 Pre-Hospital Respiratory Airway Management
			EMS 204L Pre-Hospital Respiratory Airway

12TH GRADE

English	Math	Communications	Emergency Medical Services
ENG 104 English Composition and Research	STAT 213 Statistical Methods	CAS 201 Business Communication	ENMU-R Semester 1 EMS 208 Pre-Hospital Pharmacology EMS 208L Pre-Hospital Pharmacology Lab
			EMS 205 Patient Assessment and Assessment
			EMS 205L Patient Assessment and Assessment
			EMS 214 Pre-Hospital Medical Life Support I EMS 214L Pre-Hospital Medical Life Support I Lab
		EMS 273 EMS Computer Applications	ENMU-R Semester 2
			EMS 210 EMS Colloquium I
			EMS 222 EMS Operations EMS 222L EMS Operations Lab
			EMS 206 Paramedic Trauma Life Support

Should have been completed in 9th and 10th grade year. ENTR 101 The Entrepreneurial Mindset

**Need a 3.0 GPA & ENMU-R AccuPlacer test placement in MATH 107 or Higher

Prerequisite: Satisfactory ACT scores or Math 097/098

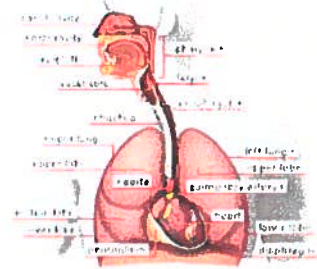
***Need a 3.0 GPA & ENMU-R AccuPlacer test placement in ENG 102 or Higher

Prerequisite: Satisfactory ACT scores or Placement Exam scores or ENG 096

RESPIRATORY THERAPY

Program Overview

Respiratory Therapy is an exciting and rewarding highly specialized health care profession. Respiratory Therapists are health care professionals trained to be specialists in the treatment and maintenance of breathing disorders. Respiratory Therapists are the only health care professionals who are trained to care for patients who have difficulty breathing. Respiratory Therapists can assess, evaluate, and treat people of all ages with lung problems like asthma, COPD, chest trauma,



Completion Options

The Associate of Applied Science degree in Respiratory Therapy is a four-semester program. Upon completion of the A.A.S. program, graduates can take the registry examinations given by the National Board for Respiratory Care (NBRC). The Associate of Applied Science degree in Respiratory Therapy transfers into a Bachelor of Applied Arts and Science degree program at ENMU. See the current catalog for the complete degree plan. Course availability varies each program year. A.A.S. - 73.5-75.5 credit hours

RCP 103 Introduction to Respiratory Care.....	3
RCP 104 Cardiopulmonary Physiology.....	3
RCP 105/105L Basic Therapeutics w/Lab	4
RCP 106 Cardiopulmonary Pharmacology.....	3
RCP 108/108L Basic Assessment/Monitoring w/Lab...4	
RCP 201/201L Adv. Assessment Monitoring w/Lab ...6	
RCP 203 Cardiopulmonary Disorders - Adults.....	3
RCP 205 Cardiopulmonary Disorders - Neonatal/Pediatric....	3
RCP 204/204L Specialty Therapeutics w/Lab.....	4
RCP 107L-109L-202L-209L (hospital rotations).....	17

Career Outlook

According to the Bureau of Labor Statistics (Occupational Outlook Handbook), employment of Respiratory Therapists is projected to grow 12 percent through 2024, faster than the average for all occupations. Growth in the middle-aged and elderly population will lead to an increased incidence of respiratory conditions such as pneumonia, chronic obstructive pulmonary disease (COPD), and other disorders that can permanently damage the lungs or restrict lung function. The aging population will in turn lead to an increased demand for respiratory therapy services and treatments, mostly in hospitals.

Why Respiratory Therapy?

- Respiratory Therapists work with people of all ages in emergency or critical care settings.
- With their knowledge and unique skill set, Respiratory Therapists are experts on cardiopulmonary disorders.
- Respiratory Therapy is a fast-growing field providing the opportunity for travel, competitive salaries, continued learning, diversity of work environments and the knowledge that you

Top related in-demand job settings/ occupations: intensive-care units, emergency rooms, operating rooms, home care agencies, long-term care facilities, sleep labs, aeromedical transport, and other critical care areas within a hospital setting

RESPIRATORY THERAPY

11TH GRADE

English	Math	Communications	Emergency Medical Services
ENMU-R English 102**	ENMU-R Intermediate Algebra Math 107***	ENMU-R Success Skills for College and Life UNIV 101*	ENMU-R Semester 1 CTE 210 Employability Skills EMS 101 Basic Life Support Provider (CPR)
		ENMU-R Interpersonal Communications COMM 101*	ENMU-R Semester 2 RCP 103 Introduction to Respiratory Therapy RCP 104 Cardiopulmonary Physiology
		BIOL 109 Survey of Anatomy and Physiology for Allied Health	RCP 105/L Basic Therapeutics and Lab RCP 106 Cardiopulmonary Pharmacology

12TH GRADE

English	Math	Communications	Emergency Medical Services
ENG 104 English Composition and Research	STAT 213 Statistical Methods	CAS 201 Business Communication	ENMU-R Semester 1 RCP 107L Clinical Procedures I RCP 108/L Basic Assessment and Monitoring and Lab
			RCP 109L Clinical Procedures II
			RCP 110/L Critical Care Therapeutics and Lab
			RCP 201/L Advanced Assessment and Monitoring and Lab EMS 214L Pre-Hospital Medical Life Support I Lab
		EMS 273 EMS Computer Applications	ENMU-R Semester 2
			RCP 202L Clinical Procedures III
			RCP 203 Cardiopulmonary Disorders I RCP 205 Cardiopulmonary Disorders II
			RCP 204/L Specialty Therapeutics

Should have been completed in 9th and 10th grade year. ENTR 101 The Entrepreneurial Mindset , CIT 151 Basic Computer Skills II

**Need a 3.0 GPA & ENMU-R AccuPlacer test placement in MATH 107 or Higher

Prerequisite: Satisfactory ACT scores or Math 097/098

***Need a 3.0 GPA & ENMU-R AccuPlacer test placement in ENG 102 or Higher

Prerequisite: Satisfactory ACT scores or Placement Exam scores or ENG 096

MEDICAL ASSISTING

Program Overview

Medical Assistants are multi-skilled health professionals specifically trained to work in physician's offices performing administrative and clinical duties. This Commission on Accreditation of Allied Health Education Programs (CAAHEP) accredited program offers the student an opportunity to earn a certificate in medical assisting and be eligible to take the CMA (AAMA) exam to become a Certified Medical Assistant.

Students will learn a variety of administrative skills. These include answering telephones and screening calls; appointment scheduling; billing and collection techniques; insurance claims processing and coding; and office management skills and payroll. Student will also learn clinical skills, including taking a patient history; entering electronic medical records; scribing for physician; taking vital signs (blood pressure, temperature, pulse, respirations); drawing blood for lab tests; sterilizing instruments; and assisting the doctor with office surgery and/or procedures and injections.



Completion Options

The Certificate of Occupational Training program is three semesters (41.5 credits) beginning in the fall semester and ending with a practicum in a physician's office in the summer semester. Students can also receive an Associate of Science degree by completing the certificate requirements and then taking another 27 credits for two additional semesters.

The Associate of Science in Medical Assisting transfers into a Bachelor of Applied Arts and Science or Bachelor of Occupational Education at ENMU.

See the current catalog for the complete Certificate and Associate of Science degree programs. Course availability varies each semester.

Certificate of Occupational Training - 41.5 credit hours

MDST 102 Medical Terminology	3
MDST 104 Administrative Medical Skills I	2
MDST 105 Clinical I	1
MDST 106 Professional Development	2
MDST 118 Current Issues for Allied Health	2

MDST 103 Anatomy and Physiology for Allied Health ..	3
MDST 107 Clinical Medical Assisting II	2
MDST 108 Pharmacology for Allied Health	3
MDST 109 Administrative Medical Skills II	3
MDST 113 Medical Technology	2
MDST 205 Practice Management and EHR	2
MDST 110 Seminar	1

Career Outlook

As one of the fastest growing allied health care careers, medical assisting offers terrific opportunities for advancement. Medical assistants can advance to office manager, clinical supervisor, or qualify for a variety of administrative support occupations. Some medical assistants choose to teach medical assisting. Others choose to obtain a bachelor's degree in human services, health promotion, or health services management. Medical assistants are paid competitive wages and can receive valuable benefits. More importantly, they have the satisfaction of knowing that they are helping others and making a positive difference in people's lives.

Top related in demand job settings: physician offices, public/private hospitals, inpatient/outpatient facilities

See also related fields: Phlebotomy, Medical Coding

Why Medical Assisting?

Medical assistants are trained to do everything necessary to work in a medical office, including both administrative and clinical skills. With their unique versatility, medical assistants are proving to be the allied health professional of choice for this decade and beyond. The program's placement rate for graduates is 93 – 100 percent. ENMU-Roswell's program is one of three CAAHEP accredited programs in New Mexico.

MEDICAL ASSISTING

11TH GRADE

English	Math	Communications	Medical Assisting
ENMU-R English 102**	ENMU-R Intermediate Algebra Math 107***	ENMU-R Success Skills for College and Life UNIV 101*	ENMU-R Semester 1 CTE 210 Employability Skills MDST 102 Medical Terminology EMS 101 Basic Life Support (CPR)
		ENMU-R Interpersonal Communications COMM 101*	ENMU-R Semester 2 MDST 104 Administrative Medical Skills I EMS MDST 104L Administrative Medical Skills I Lab
			MDST 105L Clinical Medical Assisting I MDST 106 Professional Development

12TH GRADE

English	Math	Communications	Medical Assisting
ENG 104 English Composition and Research	STAT 213 Statistical Methods	CAS 201 Business Communication	ENMU-R Semester 1 MDST 118 Current Issues in Allied Health EMS 208L Pre-Hospital Pharmacology Lab
			EMS 205 Patient Assessment and Assessment
			EMS 205L Patient Assessment and Assessment
			EMS 214 Pre-Hospital Medical Life Support I EMS 214L Pre-Hospital Medical Life Support I Lab
		CIT 151 Basic Computer Skills II	ENMU-R Semester 2
			MDST 103 Anatomy and Physiology for Allied
			MDST 205 Practice Management and EHR MDST 110 Seminar
			MDST 111L Medical Assisting Practicum

Should have been completed in 9th and 10th grade year. ENTR 101 The Entrepreneurial Mindset , CIT 151 Basic Computer Skills II

**Need a 3.0 GPA & ENMU-R AccuPlacer test placement in MATH 107 or Higher

Prerequisite: Satisfactory ACT scores or Math 097/098

***Need a 3.0 GPA & ENMU-R AccuPlacer test placement in ENG 102 or Higher

Prerequisite: Satisfactory ACT scores or Placement Exam scores or ENG 096

UNIVERSITY STUDIES PATHWAY

Program Overview

The University Studies Associate of Arts degree program is a two-year transfer degree designed to be consistent with freshman and sophomore courses at four-year universities. This degree is offered both on-campus and online. To receive the Associate of Arts degree in University Studies, students must complete the 49 credit hours from the General Education Common Core Requirements listed below, plus 15 credit hours of electives, which may be in a specific field or from various fields of study. Two electives (totaling no more than six credit hours) may be selected from vocational/ career technical courses (disciplines not listed in the New Mexico General Education Common Core). The degree requires a minimum of 64 credit hours, at least 20 of which must be in courses at the 200 (sophomore) level. A cumulative GPA of at least 2.0 is required upon completion. Students are responsible for knowing the rules and regulations concerning graduation requirements and for registering in required courses.



Maximum transferability can be assured when students carefully coordinate their Associate of Arts degree course work with the general education requirements of the four-year institution to which they plan to transfer. ENMU-Roswell advises students preparing for specific careers in engineering, health sciences, or other profession-related fields to seek advising from the four-year institution of their choice to determine the appropriate transferability of electives.

<u>Advisor's Notes/Recommendations:</u>
In order to improve student success probability and reduce unnecessary attrition, all students must take the University Skills Placement Test prior to entering the program.
All lectures and corresponding labs must be taken simultaneously.
Student must have an ENMU Campus System cumulative grade point average of 2.0 in order to meet graduation requirements.
Submit a Graduation Application before the close of the semester preceding the expected completion date.
<u>Program Requirements:</u>
<ul style="list-style-type: none"> ENMU-Roswell advises students preparing for careers in engineering, health sciences, or other profession-related fields that some of this course work may not transfer toward the general education requirements but will usually apply toward electives requirements. Students who have identified a particular university at which they wish to complete their bachelor degree should consult the transfer guide for that institution for more current and detailed advice. A minimum of 15 credit hours of electives selected from the core courses of academic courses for transfer to New Mexico institutions of higher education. A minimum of 6 credit hours of HUM, and a minimum of 6 credit hours of MATH must be taken. Electives, HUM, and MATH courses may be 4 credit hour courses or 3 credit hour courses. The degree requires a minimum of 64 credit hours, at least 20 of which must be in courses at the 200 (sophomore) level. Two Electives (totaling no more than six credit hours) may be selected from vocational/career technical disciplines not listed in the New Mexico General Education Common Core) courses. However, not all New Mexico transfer institutions give credit for vocational/career technical courses. It is the responsibility of the student to check the requirements of the transfer institution. Electives are opportunities to meet 13 -16 hours of the required 20 hours of 200 level requirements

UNIVERSITY STUDIES PATHWAY

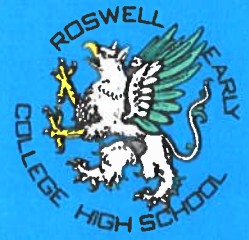
11TH GRADE

English	Math	Communications	Medical Assisting
ENMU-R English 102**	ENMU-R Intermediate Algebra Math 107***	ENMU-R Success Skills for College and Life UNIV 101*	ENMU-R Semester 1 ENTR 101 The Entrepreneurial Mindset PSY 134 The Psychology of Success UNIV 101 Principles of Student Success
		ENMU-R Interpersonal Communications COMM 101*	ENMU-R Semester 2 *ENG 102 English Composition MATH Common Core I Common Core II CIT 151 Basic Computer Skills II

12TH GRADE

English	Math	Communications	Medical Assisting
ENG 104 English Composition and Research	STAT 213 Statistical Methods	CAS 201 Business Communication	ENMU-R Semester 1 CIT 185 Introduction to Computer Information Systems HPE 141 Exercise and Wellness Education
			Common Core II Social and Behavioral Sciences: Common Core IV Fine Arts: Common Core Vb
			Life Sciences: Common Core III Social and Behavioral Sciences: Common Core IV Humanities: Common Core Va Elective Elective
		CIT 151 Basic Computer Skills II	ENMU-R Semester 2
			Physical Sciences: Common Core III Humanities: Common Core Va Social and Behavioral Sciences: Common Core IV
			MDST 110 Seminar

HEALTH OCCUPATIONS STUDENT ASSOCIATION
STATE CHAMPIONS
NATIONAL QUALIFIERS
2017 GOLD MEDALIST



EXTEMPORANEOUS WRITING

2017 GOLD MEDALIST

writing
people



ELIZABETH MAGUIRE

**ROSWELL EARLY COLLEGE HIGH
SCHOOL**



New Mexico Champion

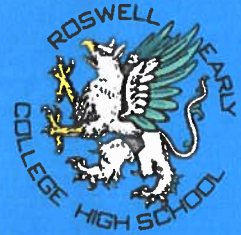


HEALTH OCCUPATIONS STUDENT ASSOCIATION

STATE CHAMPIONS

NATIONAL QUALIFIERS

2017 SILVER/BRONZE MEDALIST



BIOLOGICAL LABORATORY SCIENCE

2017 SILVER MEDALIST

YARELI REYES

ROSWELL EARLY COLLEGE HIGH SCHOOL



New Mexico Champion

CREATIVE PROBLEM SOLVING HEALTHY LIFE STYLES

2017 SILVER MEDALIST

NAYELI SANCHEZ

ROSWELL EARLY COLLEGE HIGH SCHOOL



New Mexico Champion

CREATIVE PROBLEM SOLVING

2017 SILVER MEDALIST

EVELYN GONZALEZ

ROSWELL EARLY COLLEGE HIGH SCHOOL



New Mexico Champion

CREATIVE PROBLEM SOLVING

2017 SILVER MEDALIST

VRINDA BHAKTA

ROSWELL EARLY COLLEGE HIGH SCHOOL



New Mexico Champion

CREATIVE PROBLEM SOLVING VETERINARY SCIENCE

2017 SILVER MEDALIST

ELIZABETH MAGUIRE

ROSWELL EARLY COLLEGE HIGH SCHOOL



New Mexico Champion

DENTAL SCIENCE

2017 BRONZE MEDALIST

NAYELI SANCHEZ

ROSWELL EARLY COLLEGE HIGH SCHOOL



New Mexico Champion



FIRST EARLY COLLEGE HIGH SCHOOL GRADUATE THRIVING AT NM TECH

Ever since he began taking college algebra classes at 11-years old, Tanner Thornton has been on a fast track to a bachelor's degree. At 15, Thornton was the first graduate of Roswell's Early College High School (ECHS). While at ECHS, he completed 18-20 college credits each semester and graduated from the four-year early college program in just two years. "It was challenging and a lot of work keeping track of both high school and college classes," he said. Thornton said his favorite college class was Calculus II.

In May of 2016, Thornton received an Associate of Applied Science degree in Mathematics from ENMU-Roswell while on the Presidential Scholarship. He then enrolled at New Mexico Institute of Mining and Technology (also known as NM Tech) in Socorro and is currently pursuing a bachelor's degree in Mechanical Engineering. Thornton is taking 17 hours on campus this semester. Now 16 years old, he is making new friends and is enjoying his classes, which he describes as "more challenging than in high school." His favorite class now is Ordinary Differential Equations.

Through ECHS and ENMU-Roswell, Thornton feels he was prepared well for this next stage in his college education. "But you can't be prepared for everything, like being on your own for the first time," he said. With most of his general education courses completed, Thornton said he is focusing now on central science classes to complete his bachelor's degree. He then plans to pursue a master's degree in Mechatronics Technology that combines mechanical engineering and electrical engineering.

Currently home for spring break, Thornton isn't sure if he will return to Roswell after the spring se-